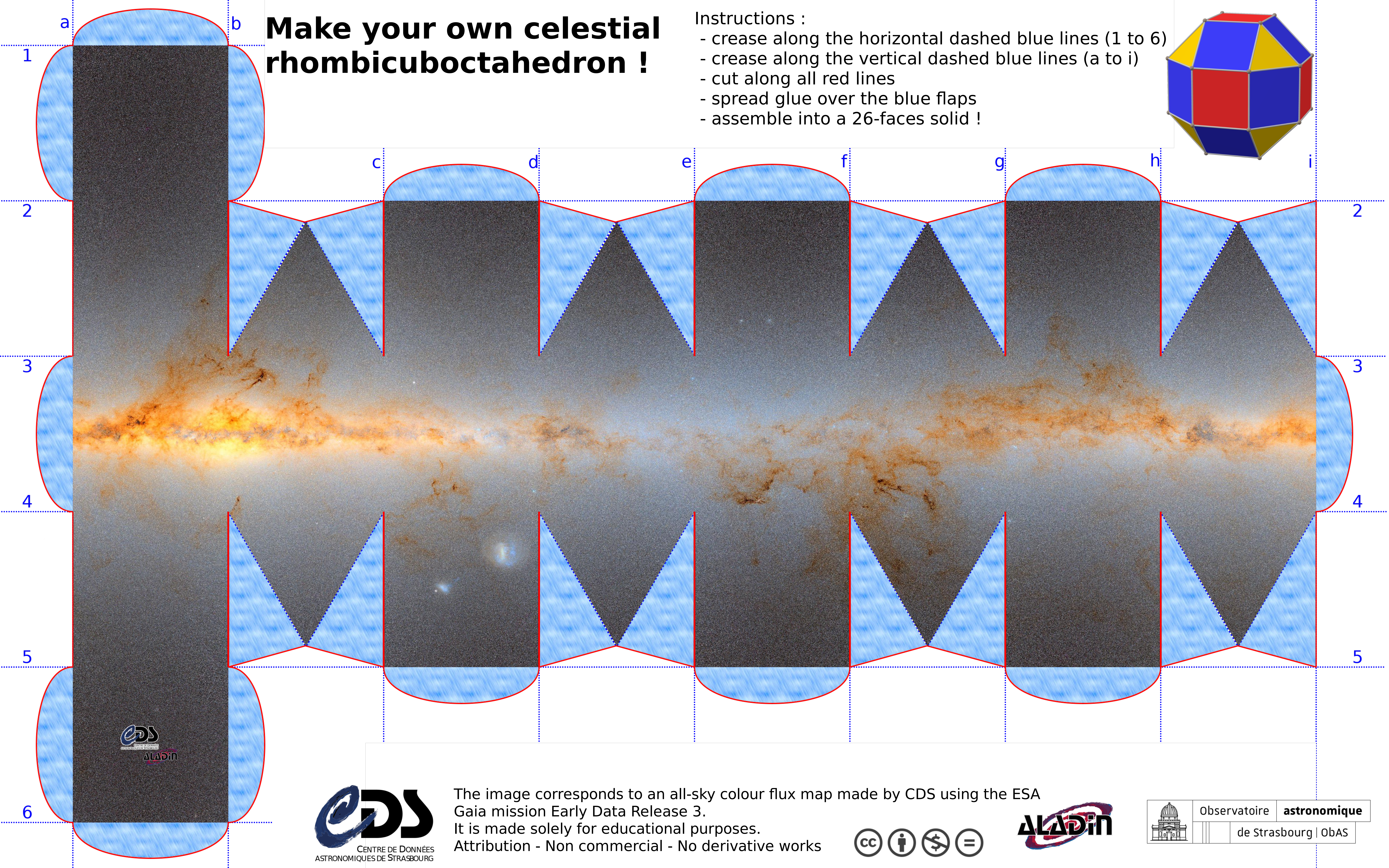
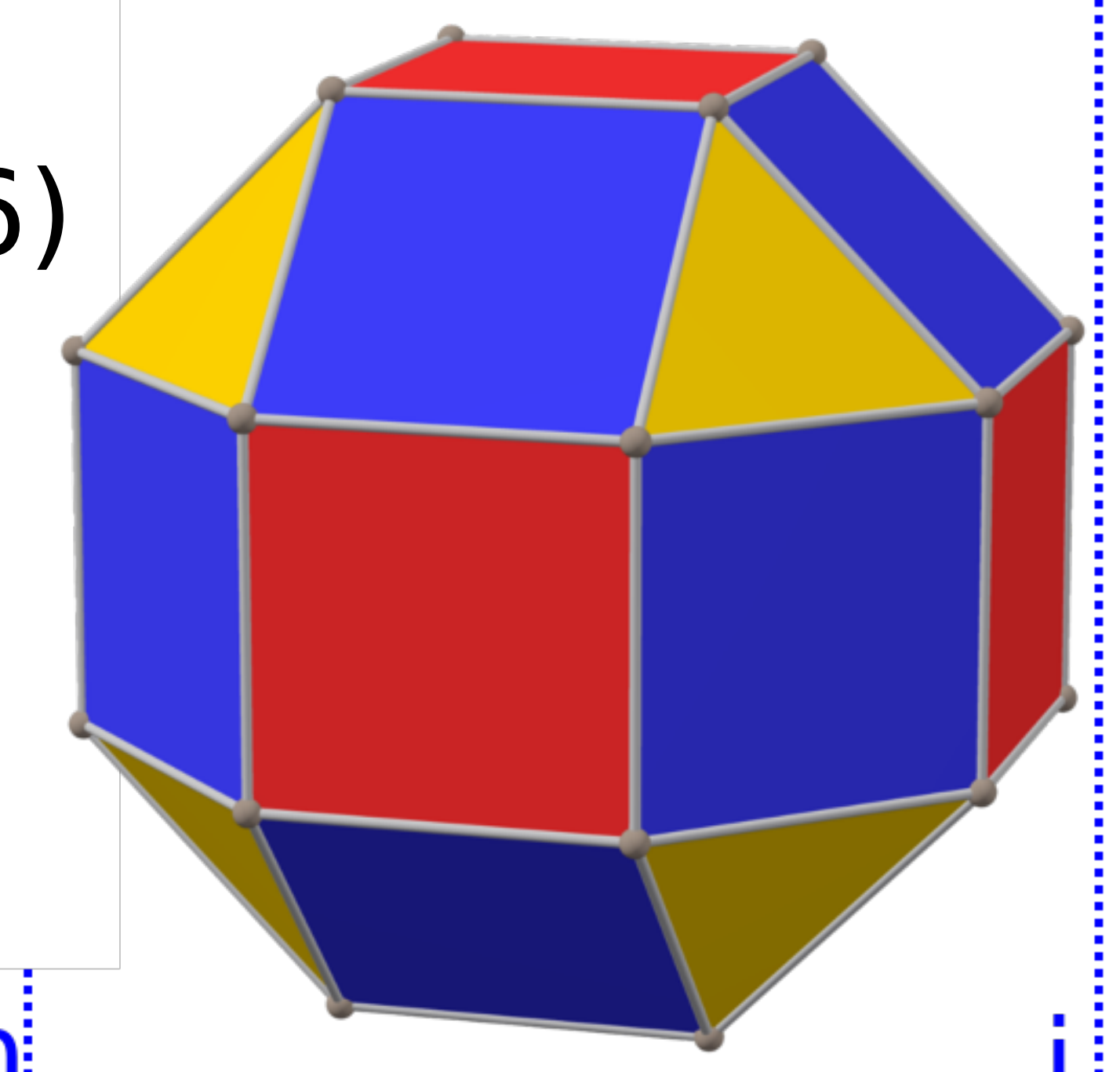


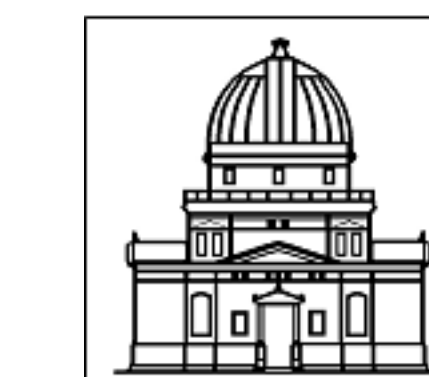
Make your own celestial rhombicuboctahedron !

Instructions :

- crease along the horizontal dashed blue lines (1 to 6)
- crease along the vertical dashed blue lines (a to i)
- cut along all red lines
- spread glue over the blue flaps
- assemble into a 26-faces solid !



The image corresponds to an all-sky colour flux map made by CDS using the ESA Gaia mission Early Data Release 3. It is made solely for educational purposes. Attribution - Non commercial - No derivative works



Observatoire **astronomique**
de Strasbourg | ObAS